



BA-7161-00

ENGINE GUARD - Honda VTX 1800 C,F

Page: 1

Revision: 1.8 - 02/07/2011

Install Time: 45 Minutes

We recommend you read all instructions fully before starting. Use Loctite® on all threaded hardware. Cover your front fender to protect it from damage prior to installing Engine Guard.

INCLUDED IN THE KIT:

(2) M10x1.25x100	(1) M10x1.25x180
(1) M10x1.25x110	

TOOLS REQUIRED:

17mm Socket	15mm Socket
-------------	-------------

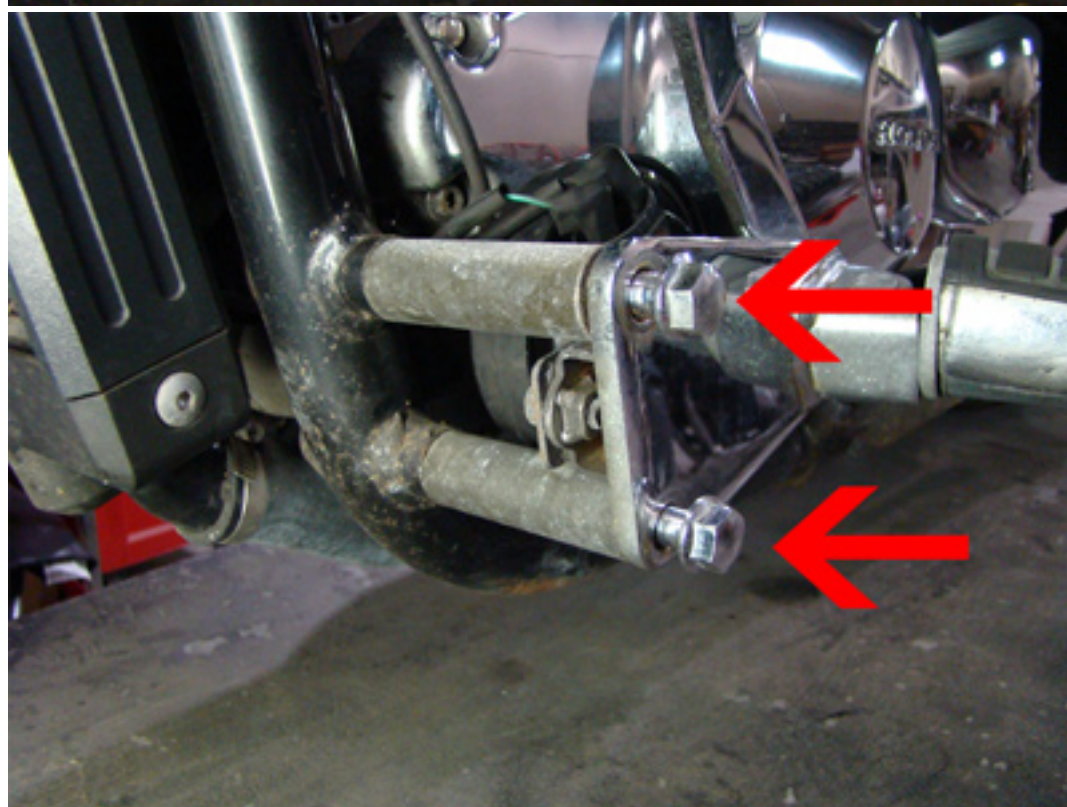
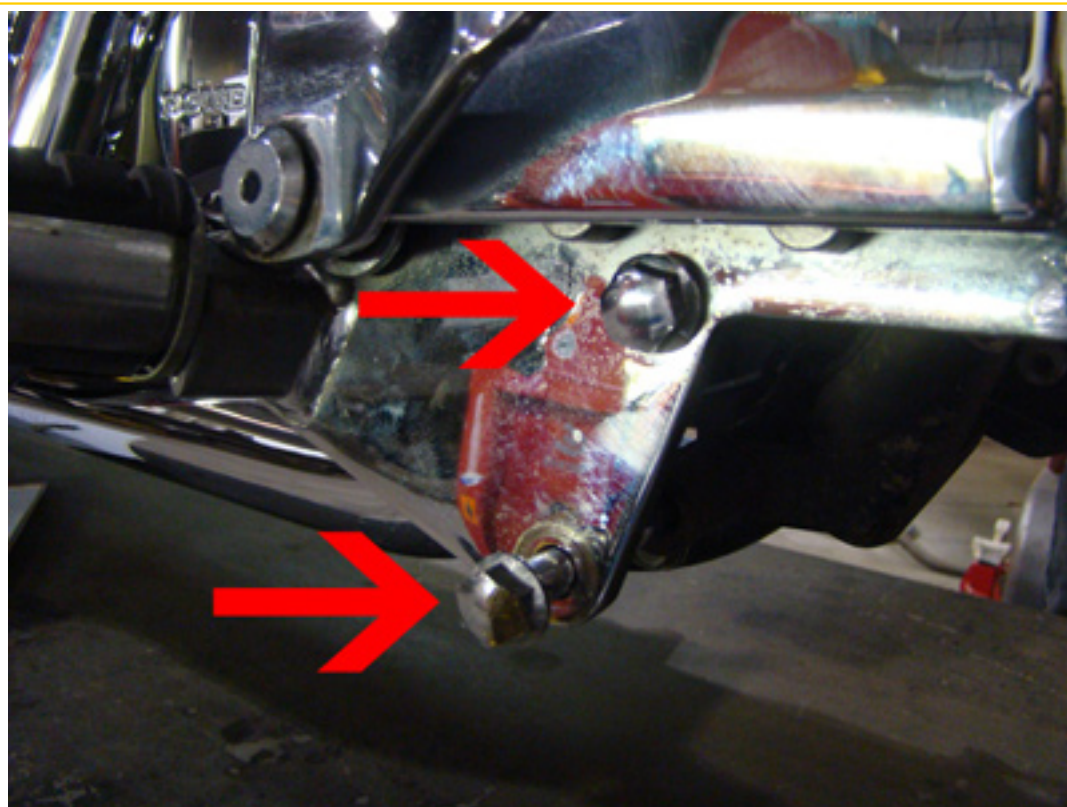
INSTRUCTIONS:

NOTE: For an easier install we recommend two people perform this installation.

1. Safely secure the bike in the upright position.
2. Remove the hardware from both controls as illustrated in the photos 1 and 2. Gently let the controls dangle. Be careful to watch for the spacers to drop.
3. At this point, it is best to have someone help you hold the engine guard while you install the hardware. Fish the engine guard carefully through the opening between the front wheel and the frame. Then rotate the guard up into place from the bottom to the top.
4. On the brake side, re-install the spacer and the new M10x1.25x180 with the stock nut and the red thread locker in the bottom hole. Install the new M10x1.25x110 bolt in the top hole.
5. On the shift side, re-install the spacers and the 2 new M10x1.25x100 bolts with the red thread locker.

RECOMMEND: Re-tighten all hardware after 100 miles of riding.

Our install guides provide a basic outline on the proper installation of our products. Further tuning and/or fitment may be required. Barons bears no responsibility on installation costs associated with this product.
© 2024 Barons Custom Accessories



Our install guides provide a basic outline on the proper installation of our products. Further tuning and/or fitment may be required. Barons bears no responsibility on installation costs associated with this product.
© 2024 Barons Custom Accessories